



62.1

GRAND CANAL

DRAWING IS PRODUCED USING THE IRISH TRANSVERSE MERCATOR (ITM) GEOGRAPHIC COORDINATE SYSTEM

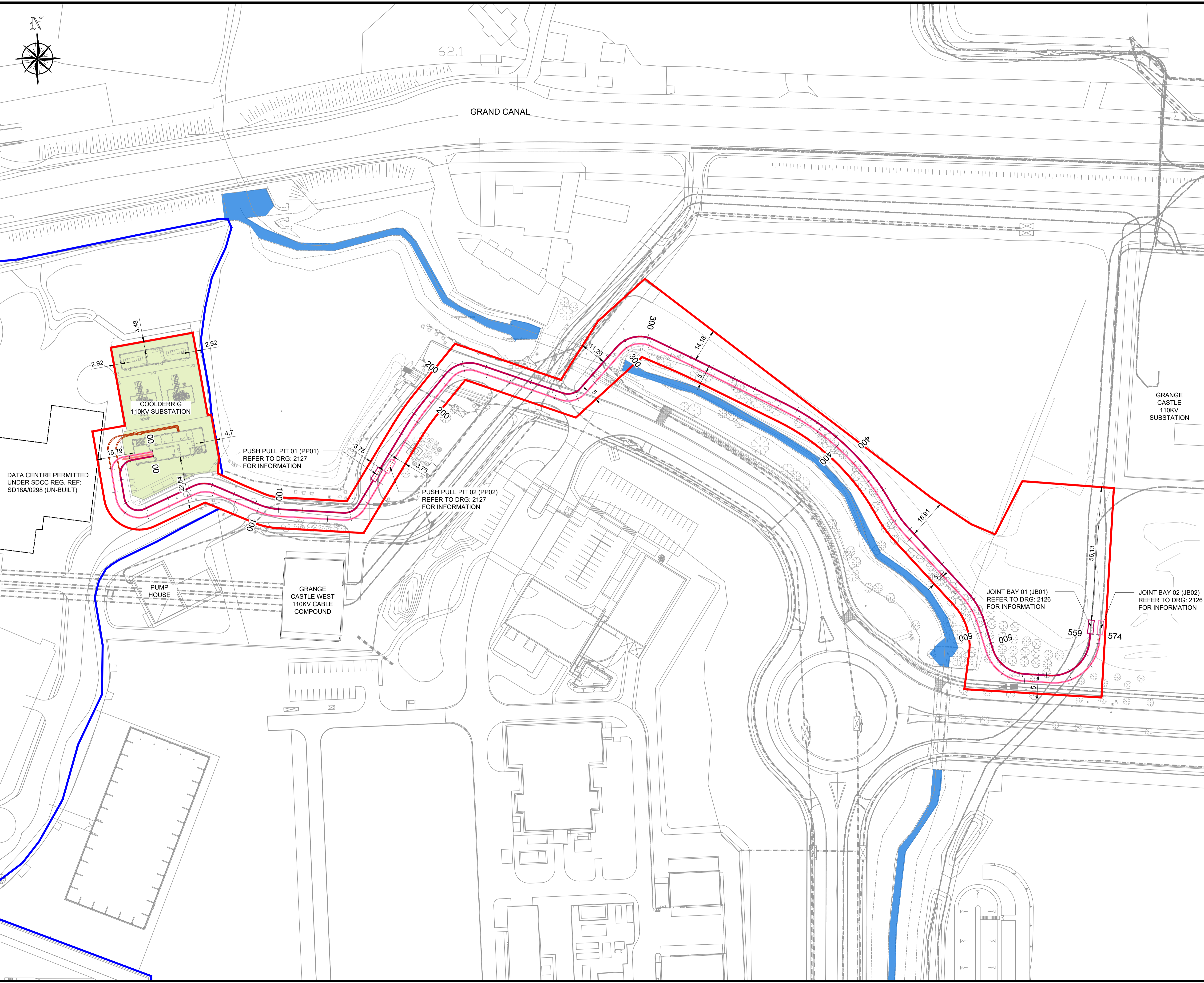
A1

LEGEND:

- PLANNING BOUNDARY
- PROPERTY BOUNDARY
- PROPOSED 110KV GRANGE CASTLE TO COOLDERRIG No.1 CIRCUIT
- PROPOSED 110KV GRANGE CASTLE TO COOLDERRIG No.2 CIRCUIT
- PROPOSED FUTURE 110KV DUCTING
- PROPOSED COMMS CABLES
- - - EXISTING MV/LV UNDERGROUND CIRCUITS
- - - EXISTING 110KV UNDERGROUND CIRCUITS
- - - EXISTING PUBLIC LIGHTING LINES
- █ EXISTING GRIFFEEN RIVER
- █ COOLDERRIG SUBSTATION COMPOUND UNDER CONSTRUCTION AS PERMITTED UNDER SDCC REG. REF: SD18A/0298

NOTE:

1. THE CABLE DUCTING DEPICTED IN THIS DRAWING IS TO OUR BEST KNOWLEDGE THE INTENDED ALIGNMENT ROUTE. ON INSTALLATION SOME MINOR ADJUSTMENTS MAY ARISE AS PREVIOUSLY UNIDENTIFIED UNDERGROUND SERVICES OR SIMILARLY UNFORESEEN OBSTRUCTIONS MAY ARISE. THE CURRENT ALIGNMENTS WILL BE ADJUSTED TO SUIT ACCORDINGLY.



DATA CENTRE PERMITTED UNDER SDCC REG. REF: SD18A/0298 (UN-BUILT)

COOLDERRIG 110KV SUBSTATION

PUSH PULL PIT 01 (PP01) REFER TO DRG: 2127 FOR INFORMATION

PUSH PULL PIT 02 (PP02) REFER TO DRG: 2127 FOR INFORMATION

PUMP HOUSE

GRANGE CASTLE WEST 110KV CABLE COMPOUND

JOINT BAY 01 (JB01) REFER TO DRG: 2126 FOR INFORMATION

JOINT BAY 02 (JB02) REFER TO DRG: 2126 FOR INFORMATION

GRANGE CASTLE 110KV SUBSTATION

P03	ISSUE FOR PLANNING	DW	BV	09.04.21
P02	FOR DISCUSSION	DW	BV	01.04.21
P01	FOR DISCUSSION	-	-	-
Rev	Description	Drawn	Checked	Date

Clifton Scannell Emerson Associates Limited  
Consulting Engineers,  
Seaforth Lodge,  
Castledawson Avenue,  
Blackrock, Co. Dublin,  
Ireland, A94 P768

T: +353 1 288 5006  
F: +353 1 283 3466  
E: info@csea.ie  
W: www.csea.ie

Client	BCEI		
Project	EDGECONNEX SUBSTATION 110KV CABLE ROUTE OVERALL PROPOSED GRID ROUTE PLAN		
Dwg. Title			
Drawn By	DW	Date	MAR 2021
Checked By	RG	Scale	1:750 @ A1
Project Code	Originator	Zone/Phase	Level
20_167 - CSE - GEN - ZZ - DR - C - 2118			
Status Code	S2 FOR INFORMATION		
Revision	P03 PLANNING		